

FLUTE

Full Range Scales

In All Twelve Major Key Signatures

B \flat  Musical notation for the B-flat major scale in treble clef, common time. The scale consists of 12 notes: B-flat, C, D, E-flat, F, G, A-flat, B-flat, C, D, E-flat, F. The notation shows an ascending and descending sequence of eighth notes.

F  Musical notation for the F major scale in treble clef, common time. The scale consists of 12 notes: F, G, A, B-flat, C, D, E, F, G, A, B-flat, C. The notation shows an ascending and descending sequence of eighth notes.

C  Musical notation for the C major scale in treble clef, common time. The scale consists of 12 notes: C, D, E, F, G, A, B, C, D, E, F, G. The notation shows an ascending and descending sequence of eighth notes.

G  Musical notation for the G major scale in treble clef, common time. The scale consists of 12 notes: G, A, B, C, D, E, F-sharp, G, A, B, C, D. The notation shows an ascending and descending sequence of eighth notes.

D  Musical notation for the D major scale in treble clef, common time. The scale consists of 12 notes: D, E, F-sharp, G, A, B, C-sharp, D, E, F-sharp, G, A. The notation shows an ascending and descending sequence of eighth notes.

A  Musical notation for the A major scale in treble clef, common time. The scale consists of 12 notes: A, B, C-sharp, D, E, F-sharp, G-sharp, A, B, C-sharp, D, E. The notation shows an ascending and descending sequence of eighth notes.

E  Musical notation for the E major scale in treble clef, common time. The scale consists of 12 notes: E, F-sharp, G-sharp, A, B, C-sharp, D-sharp, E, F-sharp, G-sharp, A, B. The notation shows an ascending and descending sequence of eighth notes.

B  Musical notation for the B major scale in treble clef, common time. The scale consists of 12 notes: B, C-sharp, D-sharp, E, F-sharp, G-sharp, A-sharp, B, C-sharp, D-sharp, E, F-sharp. The notation shows an ascending and descending sequence of eighth notes.

For flutes with a B foot.

B

Two staves of musical notation for the B flute part. The first staff contains the first two measures, and the second staff contains the next two measures. The key signature has three sharps (F#, C#, G#) and the time signature is common time (C).

F#

Two staves of musical notation for the F# flute part. The first staff contains the first two measures, and the second staff contains the next two measures. The key signature has three sharps (F#, C#, G#) and the time signature is common time (C).

Gb

Two staves of musical notation for the Gb flute part. The first staff contains the first two measures, and the second staff contains the next two measures. The key signature has three flats (Bb, Eb, Ab) and the time signature is common time (C).

Db

Two staves of musical notation for the Db flute part. The first staff contains the first two measures, and the second staff contains the next two measures. The key signature has four flats (Bb, Eb, Ab, Db) and the time signature is common time (C).

Ab

Two staves of musical notation for the Ab flute part. The first staff contains the first two measures, and the second staff contains the next two measures. The key signature has four flats (Bb, Eb, Ab, Db) and the time signature is common time (C).

Eb

Two staves of musical notation for the Eb flute part. The first staff contains the first two measures, and the second staff contains the next two measures. The key signature has four flats (Bb, Eb, Ab, Db) and the time signature is common time (C).

Full Range Chromatic - For Flutes Only

A single staff of musical notation for a full range chromatic exercise. The exercise is divided into ten measures, numbered 1 through 10. Measures 1-4 ascend from C4 to G5, measures 5-8 descend from G5 to C4, and measures 9-10 provide a concluding phrase. The key signature is one flat (Bb) and the time signature is common time (C).

Full Range Scales

OBOE

In All Twelve Major Key Signatures



Full Range Scales

CLARINET In All Twelve Major Key Signatures

B/C  Musical notation for the B-flat major scale (Bb-C-D-E-F-G-A-Bb) in treble clef, common time. The scale is written as a single line of music with a double bar line at the end.

F/G  Musical notation for the F major scale (F-G-A-Bb-C-D-E-F) in treble clef, common time. The scale is written as a single line of music with a double bar line at the end.

C/D  Musical notation for the C major scale (C-D-E-F-G-A-B-A-B) in treble clef, common time. The scale is written as a single line of music with a double bar line at the end.

G/A  Musical notation for the G major scale (G-A-B-C-D-E-F#-G) in treble clef, common time. The scale is written as a single line of music with a double bar line at the end.

D/E  Musical notation for the D major scale (D-E-F#-G-A-B-C#-D) in treble clef, common time. The scale is written as a single line of music with a double bar line at the end.

A/B  Musical notation for the A major scale (A-B-C#-D-E-F#-G#-A) in treble clef, common time. The scale is written as a single line of music with a double bar line at the end.

E/F#  Musical notation for the E major scale (E-F#-G#-A-B-C#-D#-E) in treble clef, common time. The scale is written as a single line of music with a double bar line at the end.

E/G♭



B/D♭



G♭/A♭



D♭/E♭




A♭/B♭



E♭/F



Full Range Chromatic - For Clarinets Only



Full Range Scales

BASS CLAR. In All Twelve Major Key Signatures

B/C



Musical notation for the B/C scale in bass clef, common time. The scale consists of 11 notes: B1, C2, D2, E2, F2, G2, A2, B2, C3, D3, E3. The notes are written on a single staff with a treble clef and a common time signature.

F/G



Musical notation for the F/G scale in bass clef, common time. The scale consists of 11 notes: F2, G2, A2, B2, C3, D3, E3, F3, G3, A3, B3. The notes are written on a single staff with a treble clef and a common time signature.

C/D



Musical notation for the C/D scale in bass clef, common time. The scale consists of 11 notes: C2, D2, E2, F2, G2, A2, B2, C3, D3, E3, F3. The notes are written on a single staff with a treble clef and a common time signature.

G/A



Musical notation for the G/A scale in bass clef, common time. The scale consists of 11 notes: G2, A2, B2, C3, D3, E3, F3, G3, A3, B3, C4. The notes are written on a single staff with a treble clef and a common time signature.

D/E



Musical notation for the D/E scale in bass clef, common time. The scale consists of 11 notes: D2, E2, F2, G2, A2, B2, C3, D3, E3, F3, G3. The notes are written on a single staff with a treble clef and a common time signature.

A/B



Musical notation for the A/B scale in bass clef, common time. The scale consists of 11 notes: A2, B2, C3, D3, E3, F3, G3, A3, B3, C4, D4. The notes are written on a single staff with a treble clef and a common time signature.

E/F



Musical notation for the E/F scale in bass clef, common time. The scale consists of 11 notes: E2, F2, G2, A2, B2, C3, D3, E3, F3, G3, A3. The notes are written on a single staff with a treble clef and a common time signature.

E/G♭

Two staves of music in E-flat major (three flats). The first staff contains a melodic line starting on G4 and moving up chromatically to E5. The second staff contains a descending melodic line starting on E5 and moving down to G3.

B/D♭

One staff of music in B-flat major (two flats). The melodic line starts on B3 and moves up chromatically to B5.

G/A♭

One staff of music in G-flat major (two flats). The melodic line starts on G3 and moves up chromatically to G5.

D♭/E♭

One staff of music in D-flat major (two flats). The melodic line starts on D3 and moves up chromatically to D5.

A♭/B♭

One staff of music in A-flat major (two flats). The melodic line starts on A3 and moves up chromatically to A5.

E♭/F

Two staves of music in E-flat major (three flats). The first staff contains a melodic line starting on E4 and moving up chromatically to E5. The second staff contains a descending melodic line starting on E5 and moving down to E3.

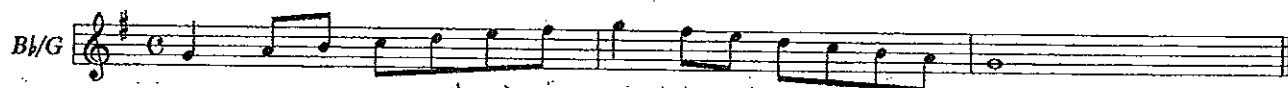
Full Range Chromatic - For Clarinets Only

Three staves of music showing a full range chromatic scale for clarinets. The first staff covers notes 1 through 4, the second staff covers notes 5 through 8, and the third staff covers notes 9 through 10. The notes are: 1. C4, 2. C♯4, 3. D4, 4. D♯4, 5. E4, 6. E♭4, 7. E4, 8. F4, 9. F♯4, 10. G4.

Full Range Scales

ALTO/BARI

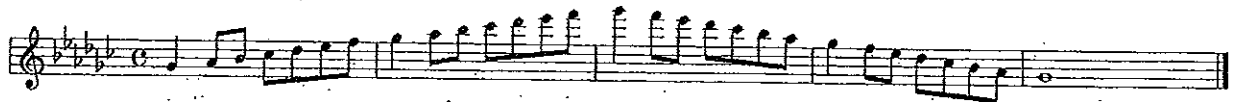
In All Twelve Major Key Signatures



For saxes with high F#/Gb keys.



For saxes with high F#/Gb keys.



E/D \flat

B/A \flat

G \flat /E \flat

D \flat /B \flat

A \flat /F

E/C

Full Range Chromatic - Saxophones Only

For saxes with high F \sharp /G \flat keys.

Full Range Scales

TENOR SAX

In All Twelve Major Key Signatures



For saxes with high F/G keys.



For saxes with high F1/G1 keys.



Full Range Chromatic - Saxophones Only



For saxes with high F1/G1 keys.

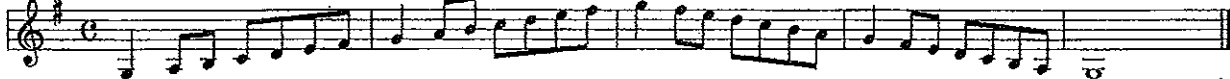


Full Range Scales

TRUMPET

In All Twelve Major Key Signatures

B \flat /C  Musical staff for the B-flat/C major scale. The key signature has one flat (B-flat). The scale is written in treble clef with a common time signature (C). The notes are: B-flat, C, D, E, F, G, A, B, A, G, F, E, D, C, B-flat.

F/G  Musical staff for the F/G major scale. The key signature has one sharp (F-sharp). The scale is written in treble clef with a common time signature (C). The notes are: F, G, A, B, C, D, E, F, E, D, C, B, A, G, F.

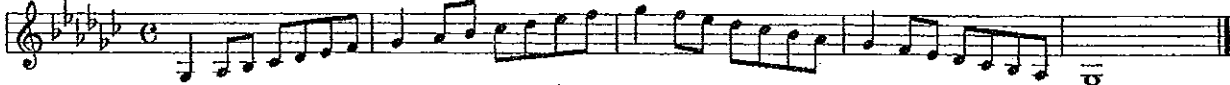
C/D  Musical staff for the C/D major scale. The key signature has two sharps (F-sharp, C-sharp). The scale is written in treble clef with a common time signature (C). The notes are: C, D, E, F, G, A, B, C, B, A, G, F, E, D, C.

G/A  Musical staff for the G/A major scale. The key signature has three sharps (F-sharp, C-sharp, G-sharp). The scale is written in treble clef with a common time signature (C). The notes are: G, A, B, C, D, E, F, G, F, E, D, C, B, A, G.

D/E  Musical staff for the D/E major scale. The key signature has four sharps (F-sharp, C-sharp, G-sharp, D-sharp). The scale is written in treble clef with a common time signature (C). The notes are: D, E, F, G, A, B, C, D, C, B, A, G, F, E, D.

A/B  Musical staff for the A/B major scale. The key signature has five sharps (F-sharp, C-sharp, G-sharp, D-sharp, A-sharp). The scale is written in treble clef with a common time signature (C). The notes are: A, B, C, D, E, F, G, A, G, F, E, D, C, B, A.

E/F#  Musical staff for the E/F# major scale. The key signature has six sharps (F-sharp, C-sharp, G-sharp, D-sharp, A-sharp, E-sharp). The scale is written in treble clef with a common time signature (C). The notes are: E, F, G, A, B, C, D, E, D, C, B, A, G, F, E.

E/G#  Musical staff for the E/G# major scale. The key signature has seven sharps (F-sharp, C-sharp, G-sharp, D-sharp, A-sharp, E-sharp, B-sharp). The scale is written in treble clef with a common time signature (C). The notes are: E, F, G, A, B, C, D, E, D, C, B, A, G, F, E.

Full Range Scales

HORN

In All Twelve Major Key Signatures

B \flat /F

F/C

C/G

G/D

D/A

A/E

E/B



Full Range Chromatic




Full Range Scales

TBONE / BARITONE In All Twelve Major Key Signatures

Bb  Musical staff for Bb major scale in bass clef, common time. The scale starts on Bb and ends on Bb.

F  Musical staff for F major scale in bass clef, common time. The scale starts on F and ends on F.

C  Musical staff for C major scale in bass clef, common time. The scale starts on C and ends on C.

 Musical staff for G major scale in bass clef, common time. The scale starts on G and ends on G.

G  Musical staff for G major scale in bass clef, common time. The scale starts on G and ends on G.

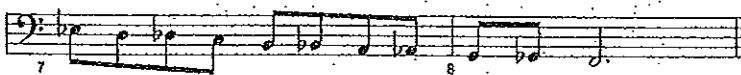
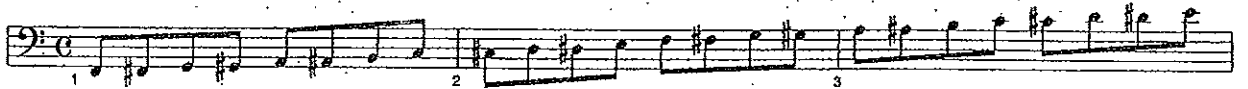
D  Musical staff for D major scale in bass clef, common time. The scale starts on D and ends on D.

A  Musical staff for A major scale in bass clef, common time. The scale starts on A and ends on A.

E  Musical staff for E major scale in bass clef, common time. The scale starts on E and ends on E.



Full Range Chromatic - Trombones Only



Full Range Scales

TUBA

In All Twelve Major Key Signatures

B \flat 

F 

C 



G 

D 

A 

E 

B



Musical staff for instrument B, featuring a bass clef, a key signature of three sharps (F#, C#, G#), and a common time signature. The staff contains a sequence of eighth and quarter notes, ending with a double bar line and a common time signature.

Bb



Musical staff for instrument Bb, featuring a bass clef, a key signature of two sharps (F#, C#), and a common time signature. The staff contains a sequence of eighth and quarter notes, ending with a double bar line and a common time signature.

Gb



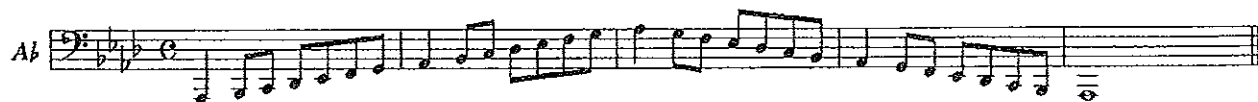
Musical staff for instrument Gb, featuring a bass clef, a key signature of two flats (Bb, Eb), and a common time signature. The staff contains a sequence of eighth and quarter notes, ending with a double bar line and a common time signature.

Db



Musical staff for instrument Db, featuring a bass clef, a key signature of three flats (Bb, Eb, Ab), and a common time signature. The staff contains a sequence of eighth and quarter notes, ending with a double bar line and a common time signature.

Ab



Musical staff for instrument Ab, featuring a bass clef, a key signature of four flats (Bb, Eb, Ab, Db), and a common time signature. The staff contains a sequence of eighth and quarter notes, ending with a double bar line and a common time signature.

Eb

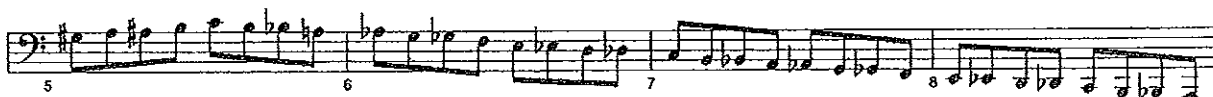


Musical staff for instrument Eb, featuring a bass clef, a key signature of three flats (Bb, Eb, Ab), and a common time signature. The staff contains a sequence of eighth and quarter notes, ending with a double bar line and a common time signature.

Full Range Chromatic - Tubas Only



Musical staff 1, featuring a bass clef and a common time signature. It contains a sequence of eighth notes, numbered 1 through 4, ending with a double bar line.



Musical staff 2, featuring a bass clef and a common time signature. It contains a sequence of eighth notes, numbered 5 through 8, ending with a double bar line.



Musical staff 3, featuring a bass clef and a common time signature. It contains a sequence of eighth notes, numbered 9 through 10, ending with a double bar line.